

SCHAEFFER



VB 42

VB 42 M

VD 42

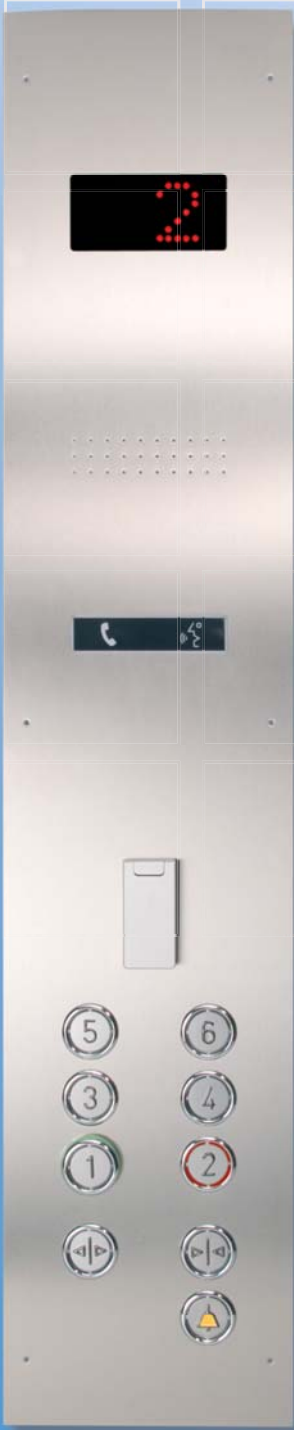


IMPRESSIONS

VB 42 / VB 42 M / VD 42

A real tough guy – and smart looking, too! The VB 42 and VB 42 M are the right choices when it comes to protection against vandalism, as well as water and dust. As a solo artist with its special optics, it can determine the design look of a fixture or be complement by further matching components to ensure compliance to standards.

Car fixture st. steel with VB 42



Car fixture st. steel with VB 42 M Label L, black



Landing fixture VB 42 M, Label R, black



Landing fixture VB 42 M, Inlay Label L, black, matt



Pane made from safety glass



2009-12-11

REVISION 3

I

INSPIRATIONS

VB 42 / VB 42 M / VD 42

42

Touch plates/plates and housings

VB 42
touch plate st. steel, matt,
housing chrome-coloured,
polished (Cr-p)

VB 42 M
touch plate
aluminium anodised
(silver-coloured),
housing chrome-coloured,
polished (Cr-p)


VB 42
touch plate st. steel, matt,
housing chrome-coloured, matt
(Cr-m)

VD 42
plate st. steel, matt,
housing chrome-coloured,
polished (Cr-p)

VB 42
touch plate st. steel, black,
housing chrome-coloured,
polished (Cr-p)

VB 42
touch plate st. steel, matt,
housing chrome-coloured,
polished (Cr-p)

VB 42
touch plate st. steel, black,
housing chrome-coloured,
polished (Cr-p)

 Further touch plate/plate finishes available on demand
III. 1. 4 - III. 1. 8

Car fixture st. steel
with VB 42

Car fixture st. steel
with VB 42 M




Landing fixture Landing fixture

Marking
on touch plate,
embossing
(laser-marked)



Marking
on faceplate,
engraved or
laser-marked



 Choice of faceplate materials

DESIGN/MARKING

VB 42 / VB 42 M

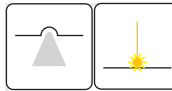


neutral

touch plate st. steel, matt

neutral
housing

Cr-p (chrome-coloured, polished)
Cr-m (chrome-coloured, matt)



embossing laser

touch plate st. steel, matt

embossing (laser-marked), without Braille

housing

Cr-p (chrome-coloured, polished)
Cr-m (chrome-coloured, matt)

Marking

height of characters 15 mm
(one-digit and two-digit characters possible)
height of symbols 18 mm



embossing

touch plate st. steel, black

embossing (brightened), without Braille

housing

Cr-p (chrome-coloured, polished)
Cr-m (chrome-coloured, matt)

Marking

height of characters 15 mm
(one-digit and two-digit characters possible)
height of symbols 18 mm



neutral

touch plate aluminium anodised (silver-coloured)

neutral
housing

Cr-p (chrome-coloured, polished)
Cr-m (chrome-coloured, matt)

VB 42

Vandalism Button 42

42

housing Cr-p
(chrome-
coloured,
polished)



Mounting tool
recommended
I. 10. 5



Characteristics

Fixing
Faceplate thickness
Connection technology

plastic nut
1 mm ... 15 mm
0.1 mm² ... 1 mm²



Switching element

snap switch 1 NO-contact/
1 alternating contact
switching voltage = 30 V DC
switching current = 0.8 A ohmic load
switching current = 0.5 A inductive load (L/R=3 ms)
switching voltage = 30 V AC
switching current = 1 A

Recall light

LED ● ● ● ○
further colours available
on demand

option
U = 12 V ... 30 V AC/DC
U = 30 V ... 48 V AC/DC
I = 20 mA

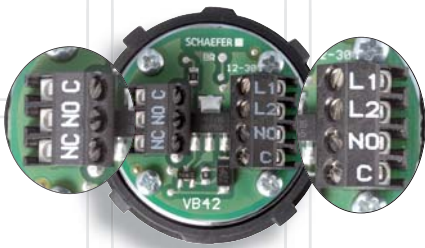
Protection category

IP 55 (EN 60529)

Compliance

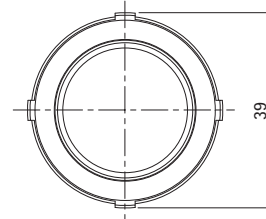
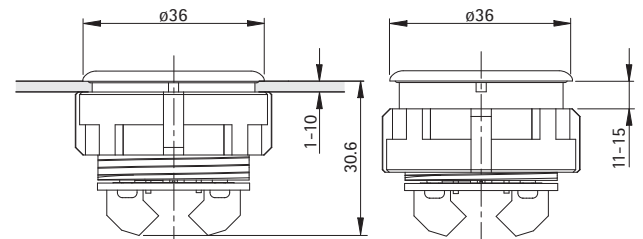


Rear view

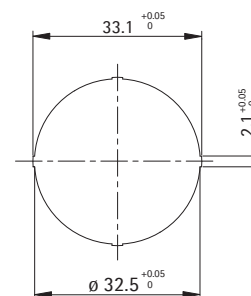


Dimensions

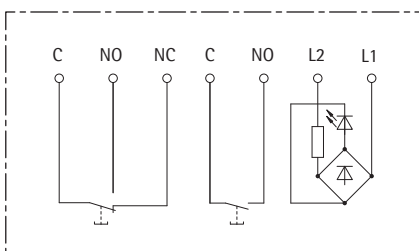
PITCH
42 75



Cutout



Wiring diagram



Marking



Combination with Label I. 2. 76 - I. 2. 79

VB 42 M

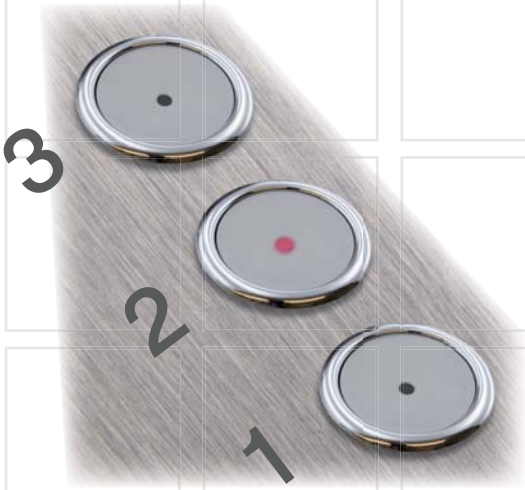
Vandalism Button 42, Metal

42

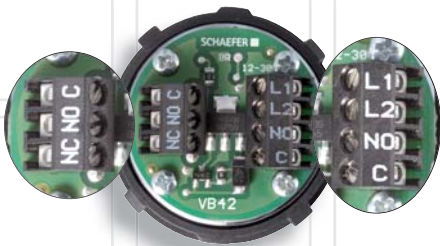
housing Cr-p
(chrome-
coloured,
polished)



Mounting tool
recommended
I. 10. 5



Rear view



Characteristics

Fixing
Faceplate thickness
Connection technology

plastic nut
1 mm ... 15 mm
0.1 mm² ... 1 mm²



Switching element

snap switch 1 NO-contact/
1 alternating contact
switching voltage = 30 V DC
switching current = 0.8 A ohmic load
switching current = 0.5 A inductive load (L/R=3 ms)
switching voltage = 30 V AC
switching current = 1 A

Recall light



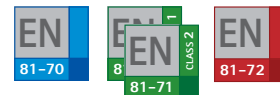
LED
further colours available
on demand

option
U = 12 V ... 30 V AC/DC
U = 30 V ... 48 V AC/DC
I = 20 mA

Protection category

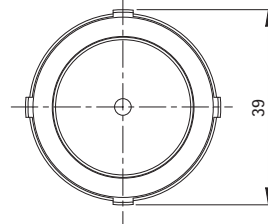
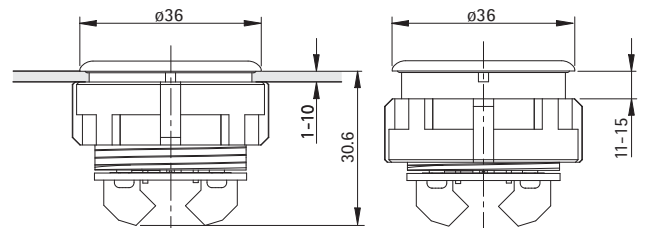
IP 55 (EN 60529)

Compliance

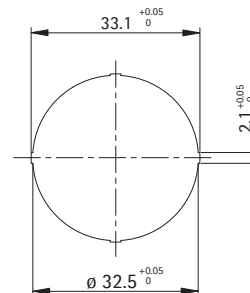


Dimensions

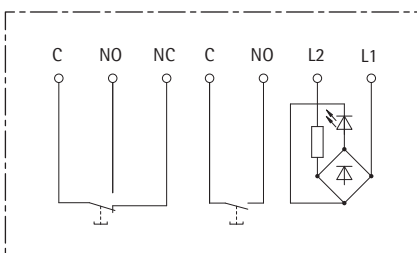
PITCH
42 75



Cutout



Wiring diagram



Marking



neutral

LABEL

Combination with Label I. 2. 76 - I. 2. 79

2010-03-19

REVISION 3

I

VD 42

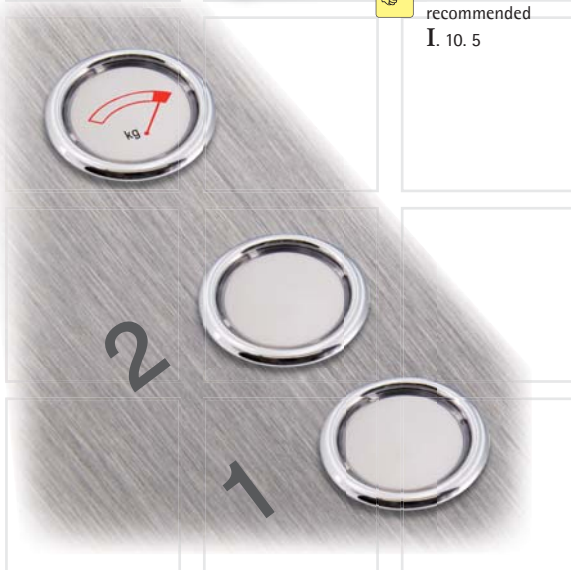
Vandalism Display 42

42

housing Cr-p
(chrome-
coloured,
polished)



Mounting tool
recommended
I. 10.5



Characteristics

Fixing plastic nut
Faceplate thickness 1 mm ... 15 mm
Connection technology 0.1 mm² ... 1 mm²

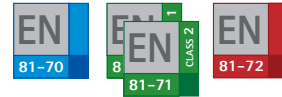


Recall light LED

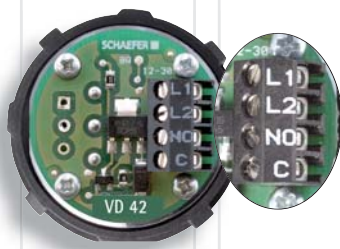
option U = 12 V ... 30 V AC/DC
U = 30 V ... 48 V AC/DC
I = 20 mA

Protection category IP 55 (EN60529)

Compliance

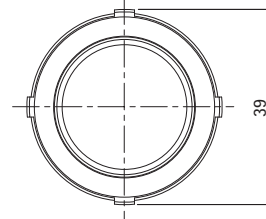
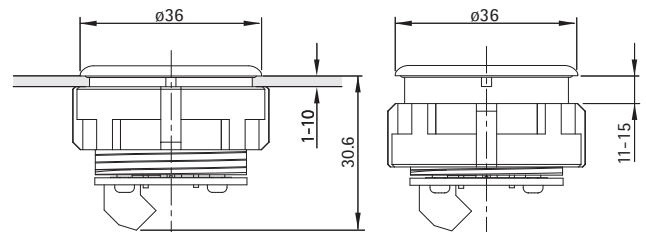


Rear view

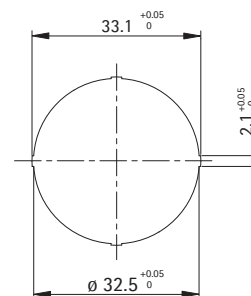


Dimensions

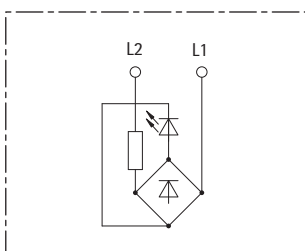
PITCH
42 75



Cutout



Wiring diagram



Marking



Combination with Label I. 2.76 - I. 2.79

MARKING

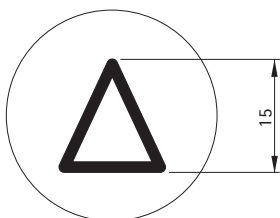
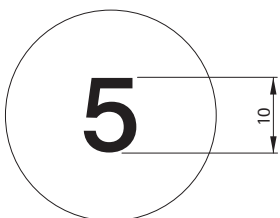
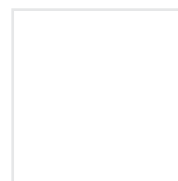
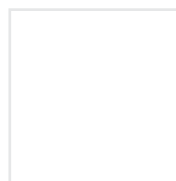
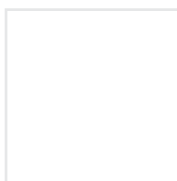
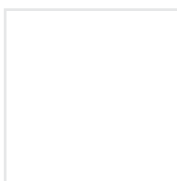


engraving



laser

Various IX. 1. 8 - IX. 1. 9



The heights of markings for characters and symbols are identical with all buttons and indicators from the Style 42.

The height of the characters depends on the number of characters within the available marking space.

number of characters ↑ $\hat{=}$ height of characters ↓

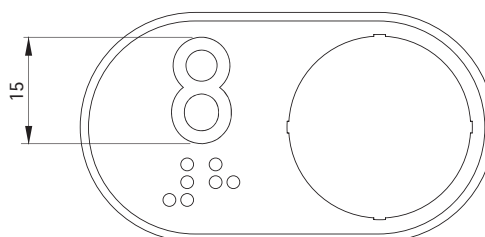
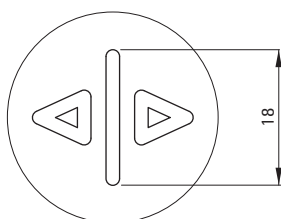
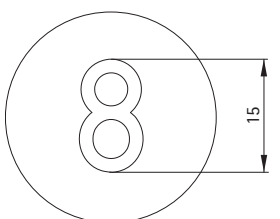
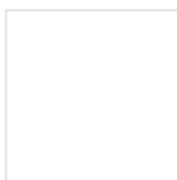
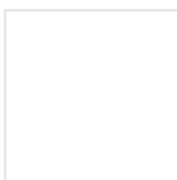
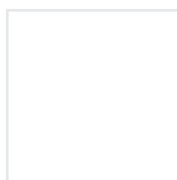
Due to the production process the appearance of the shown characters/symbols may vary from the original depending on the touch plate/plate variant.

Font: Swiss 721 MdBT



embossing

EN 81-70



Font: DIN 1451 medium (VB 42 one-digit and two-digit characters without Braille)



MARKING STYLE 42



embossing



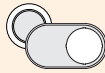
engraving



engraving



laser



Floors according to EN 81-70:

...		
-5	-4	-3
-2	-1	0
1	2	3
4	5	6
7	8	9
10	11	12
13	14	15
...		

Symbols according to DIN 15325:



Further available symbols:



Floors according to EN 81-70:

...		
-5	-4	-3
-2	-1	0
1	2	3
4	5	6
7	8	9
10	11	12
13	14	15
...		

Symbols according to DIN 15325:



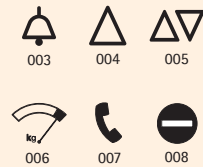
Further available symbols:



Floors:

...		
-5	-4	-3
-2	-1	0
1	2	3
4	5	6
7	8	9
10	11	12
13	14	15
...		

Symbols according to DIN 15325:



Further available symbols:



STYLE

VB 42



pages I. 2. 72 - I. 2. 74

TYPE



VB 42

(TOUCH) PLATE

st. steel, matt
st. steel, black

VB 42 M



pages I. 2. 72 - I. 2. 74



VB 42 M

aluminium, anodised

VD 42



page I. 2. 75



VD 42

st. steel, matt

LABEL



page I. 2. 76

Label L



Label R



st. steel, matt
st. steel, black

LABEL ROSETTE



page I. 2. 77

Label L



Label R



st. steel, matt
st. steel, black

INLAY LABEL



page I. 2. 78

Label L

Label R

st. steel, matt
st. steel, black

HOUSING (RIM)	LED (U in V)	LED-COLOUR	MARKING	ORIENTATION	NORM	MARKING RING/ FRAME
Cr-p Cr-m	12 ... 30 option: 30 ... 48	 	neutral embossing embossing, black		 	marking ring frame I. 2. 82

ORDER EXAMPLE VB 42, touch plate st. steel, matt, housing Cr-p, LED 30 V, blue, embossing "-1", marking ring

Cr-p Cr-m	12 ... 30 option: 30 ... 48	 	neutral		 	marking ring frame I. 2. 82
--------------	-----------------------------------	--------------	---------	--	----------	-----------------------------------

ORDER EXAMPLE VB 42 M, touch plate aluminium, anodised, housing Cr-p, LED 30 V, red

Cr-p Cr-m	12 ... 30 option: 30 ... 48	 	neutral engraving laser		 	
--------------	-----------------------------------	--------------	-------------------------------	--	----------	--

ORDER EXAMPLE VD 42, plate st. steel, matt, housing Cr-p, LED 12 V, red, engraving "symbol 006"

			embossing with/ without Braille engraving laser	0° turned by 90°		marking ring I. 2. 84
--	--	--	--	---------------------	--	--------------------------

ORDER EXAMPLE Label L, st. steel, black, embossing "2" without Braille

			embossing with/ without Braille engraving laser			frame I. 2. 85
--	--	--	--	--	--	-------------------

ORDER EXAMPLE Label Frame L, st. steel, black, embossing "symbol 003"

			embossing with/ without Braille engraving laser			marking ring frame I. 2. 84 - I. 2. 85
--	--	--	--	--	--	--

ORDER EXAMPLE Inlay Label L, st. steel, black, embossing "2" with Braille